

# ARCHITECTURAL MILLWORK

FULL-SERVICE  
FROM ESTIMATING TO  
INSTALLATION ACROSS  
NORTH AMERICA



architectural millwork casework



INSPIRED DESIGN



# NORTH AMERICAN INDUSTRY LEADERS IN CUSTOM ARCHITECTURAL MILLWORK AND CASEWORK.

**Since 1986, we've helped bring ambitious spaces to life** through expertly crafted millwork and uncompromising execution.

Operating from our 40,000+ square foot manufacturing facility in Ontario, Canada, every project is produced under our direct control. From shop drawings and production to delivery and installation, accountability never leaves our hands.

Our team of estimators, project managers, engineers, and skilled craftsmen works collaboratively with GCs, designers, and partners to bring complex interiors to life across millwork, metal, glass, and stone. The result is a smoother process and a finished space that performs as intended.

**Our industry memberships and affiliations reflect our dedication** to continuous improvement, accountability, and industry standards.

**YOUR FULL-SERVICE, DEDICATED  
MILLWORK FABRICATOR, FROM  
ESTIMATING TO INSTALLATION.**





# PRECISION DRIVES EVERY STAGE OF OUR PROCESS,

blending rich millwork with refined metal, glass, and stone accents to create a modern, distinctive, and impeccably tailored design language. Clear communication, technical expertise, and a collaborative mindset define the CCW experience for GCs, designers, and partners.

## SERVICES

THROUGH METICULOUS COORDINATION, ATTENTIVE CLIENT CARE, AND UNWAVERING RELIABILITY, WE ENSURE A SEAMLESS EXPERIENCE FROM CONCEPT TO COMPLETION.

- BUDGET & ESTIMATING
- ENGINEERING
- PROJECT MANAGEMENT
- PRODUCTION
- LOGISTICS
- INSTALLATION

## SECTORS

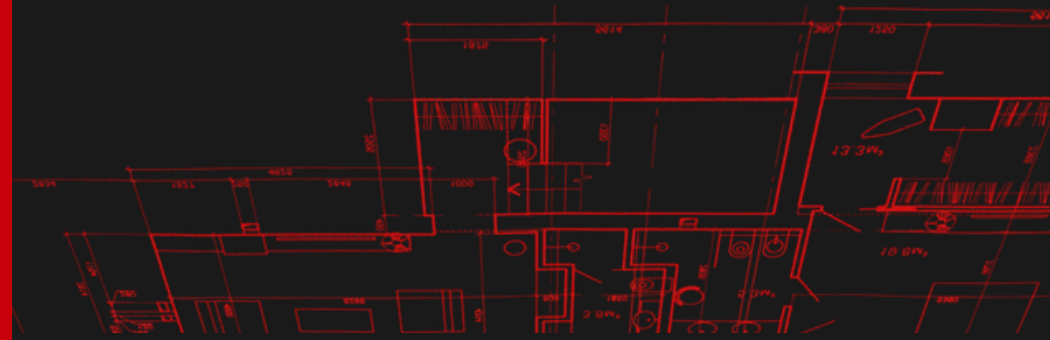
OUR EXPERIENCE SPANS MULTIPLE SECTORS, EACH WITH DISTINCT TECHNICAL, SCHEDULING, AND COORDINATION REQUIREMENTS.

- HOSPITALITY
- MULTI-FAMILY RESIDENTIAL
- INSTITUTIONAL
- COMERCIAL
- CORPORATE & OFFICE
- RETAIL
- ENTERTAINMENT

## MARKETS

WE SUPPLY AND INSTALL ARCHITECTURAL MILLWORK ACROSS CANADA AND THE UNITED STATES, WITH KEY MARKETS IN:

- ONTARIO
- BRITISH COLUMBIA
- EASTERN + ATLANTIC CANADA
- FLORIDA



# OUR CAPABILITIES

**WHERE CRAFTSMANSHIP BECOMES AN ART FORM.**

Our teams deliver complex interior packages entirely in-house, overseeing every stage from fabrication to installation.

We integrate millwork, **metal fabrication**, **glass**, **acrylic**, **upholstery**, and **solid surfaces** such as Corian and quartz into a **unified scope of work**, bridging gaps between trades and streamlining project coordination.

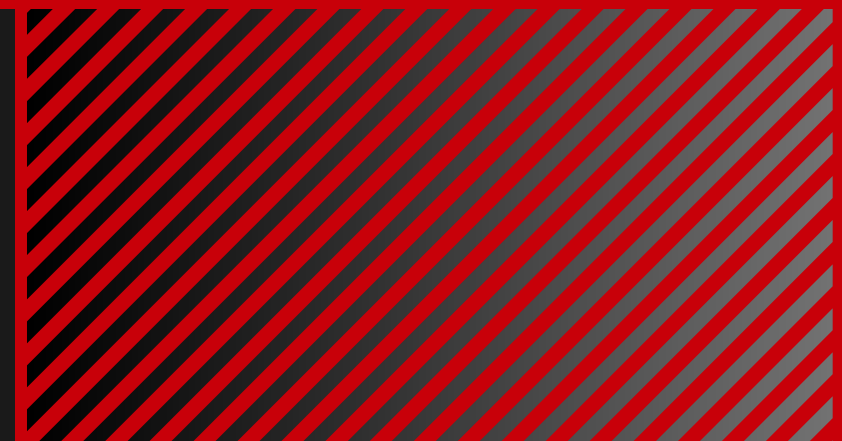
From concept to installation, we meticulously coordinate every detail to ensure buildable, predictable results on site.



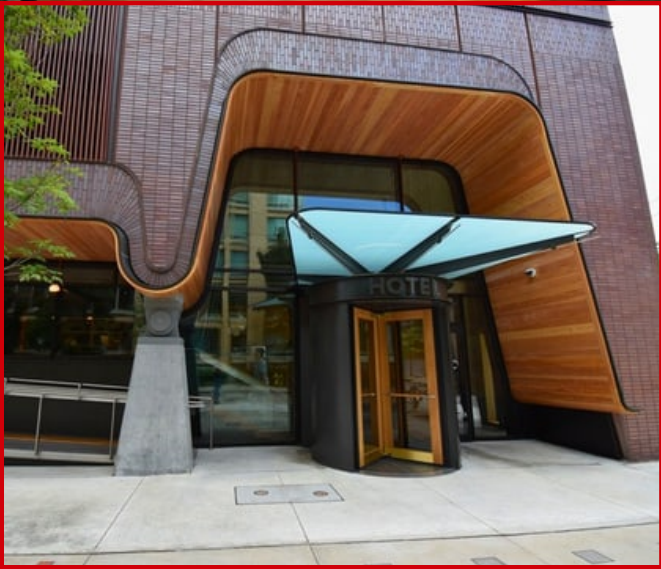


**VIEW  
OUR  
WORK**

**SEE MORE AT [CCWINC.COM/PROJECTS](https://www.ccwinc.com/projects)**



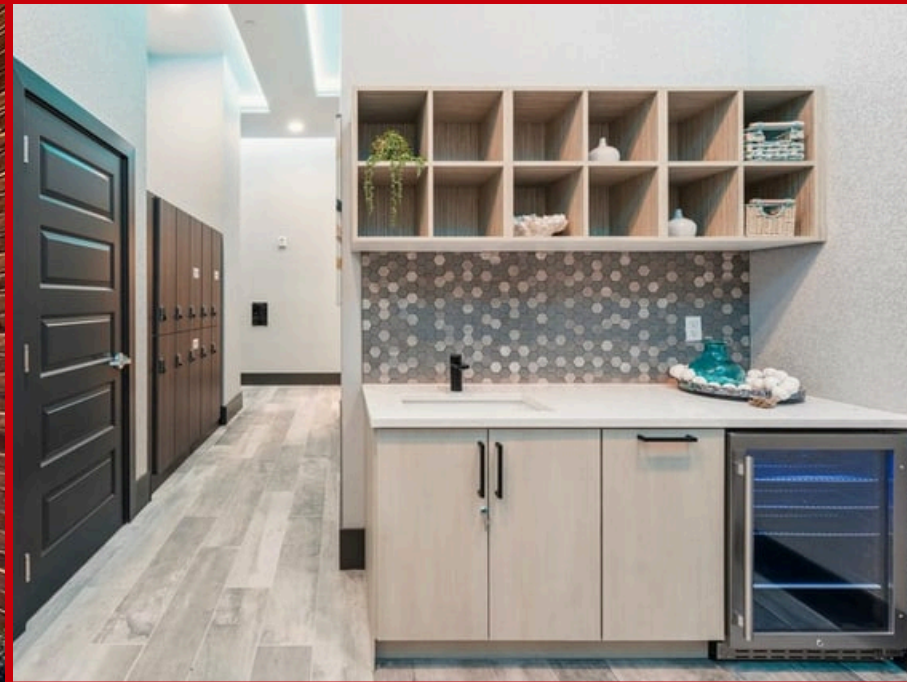
**HOSPITALITY MILLWORK**



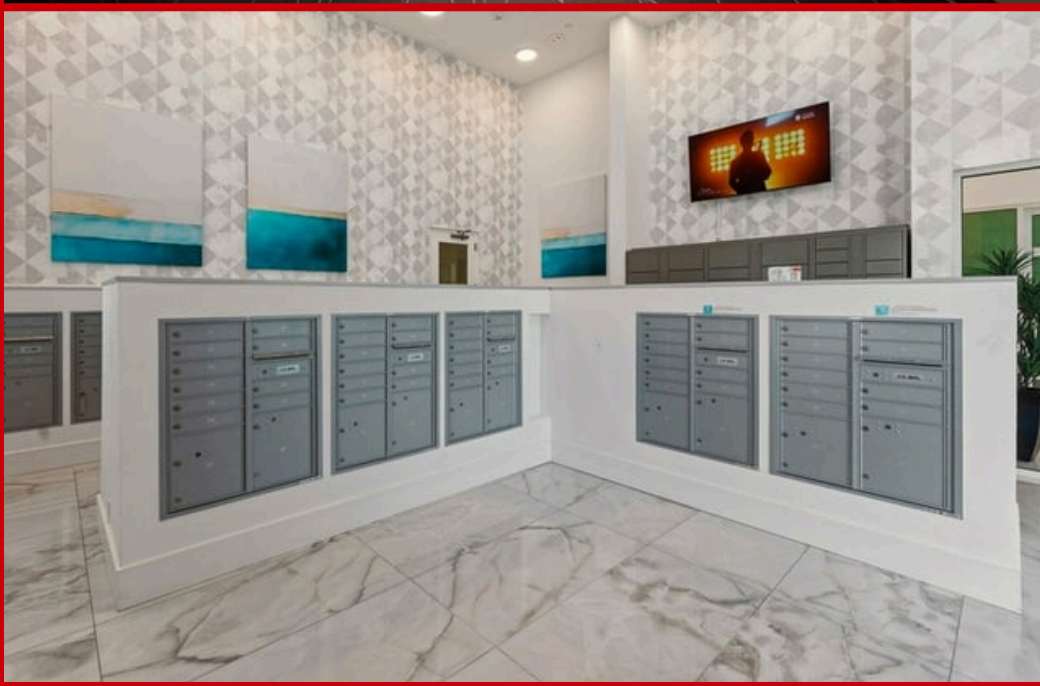
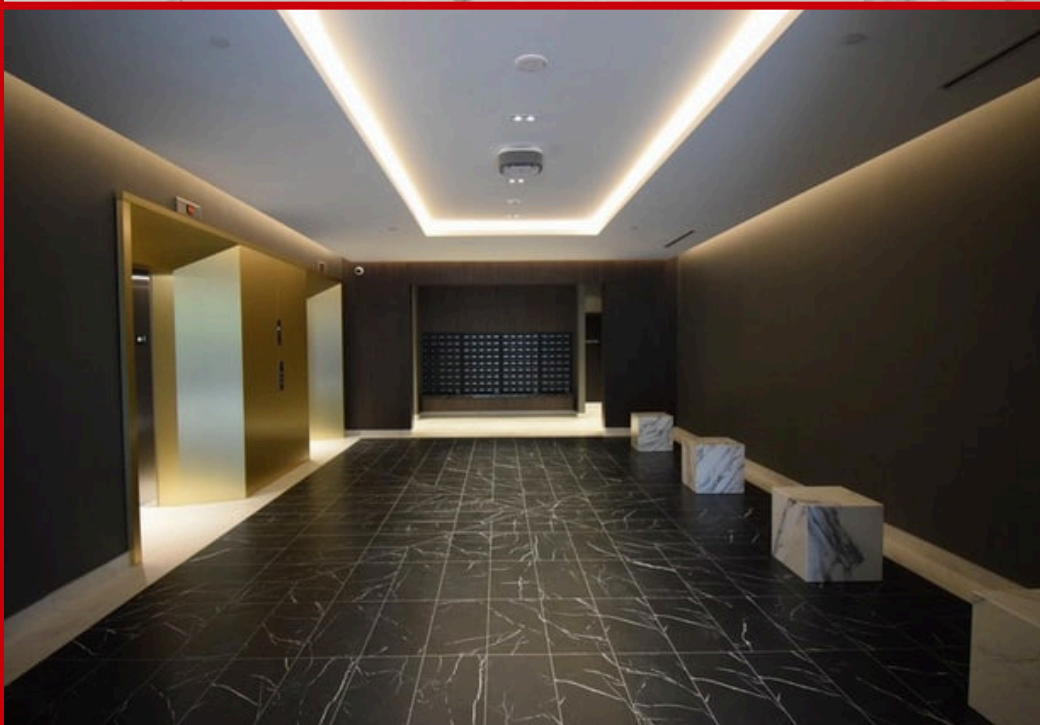
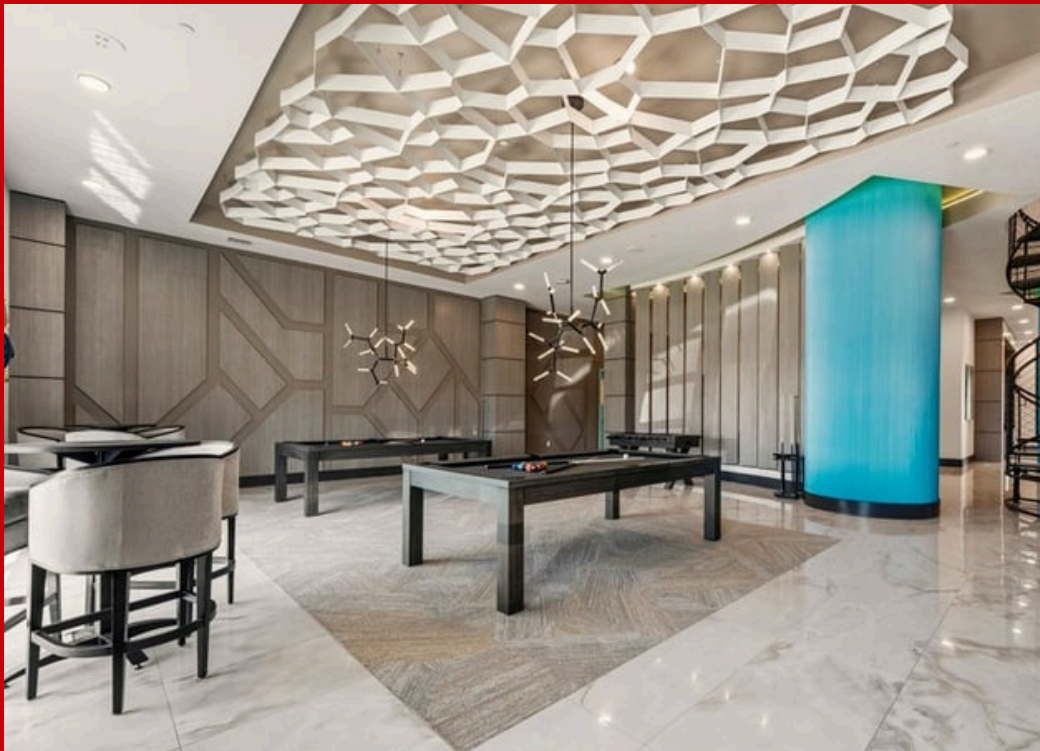
# HOSPITALITY MILLWORK



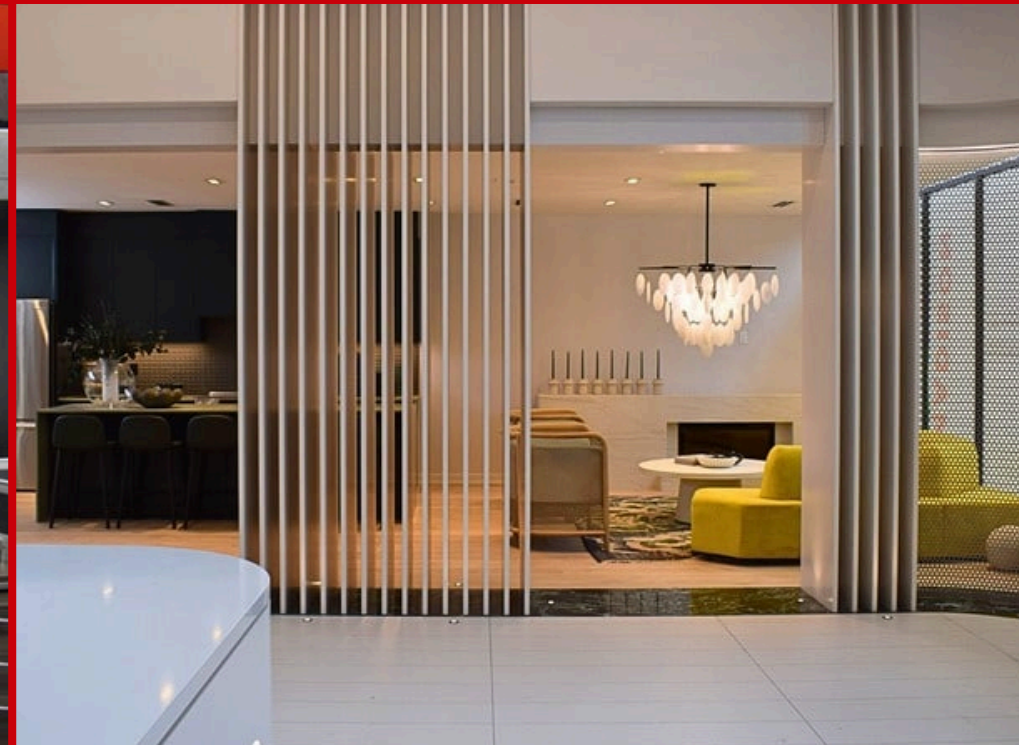
**MULTI-FAMILY MILLWORK**



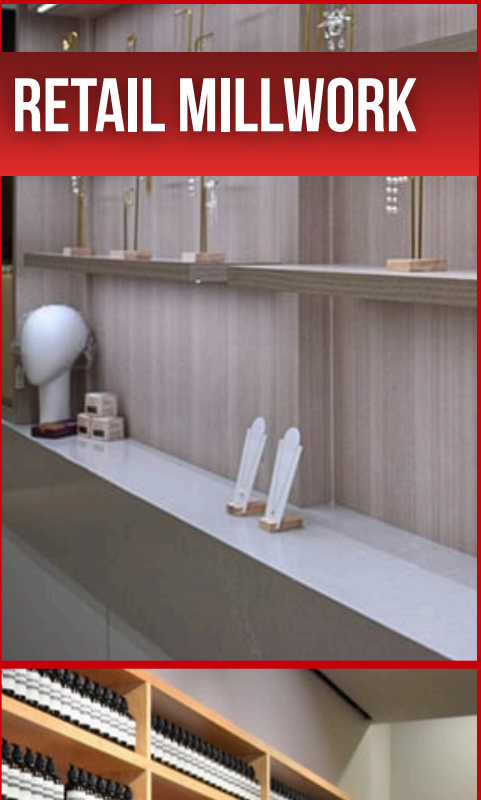
**MULTI-FAMILY MILLWORK**



**CORPORATE/OFFICE MILLWORK**



RETAIL MILLWORK



# INSTITUTIONAL MILLWORK



**ENTERTAINMENT MILLWORK**



“From our first experience working with CCW, we knew they would be a great fit for us. Through their positive customer experience to their high level of quality millwork, we have been very happy with the results on our project sites.” - JOHN RUSSO | SENIOR ESTIMATOR, WINTER PARK CONSTRUCTION.

“The craftsmanship is great, the install was fantastic, no complaints from us whatsoever. Our team was very impressed and, more importantly, the members absolutely love it.” - DAVID DESAVERIO | CHIEF OPERATING OFFICER, BURLINGTON GOLF & COUNTRY CLUB.



**CCW** architectural millwork casework

*Contact Us!*

**HEAD OFFICE**

56 RANKIN STREET, WATERLOO,  
ON, CANADA. N2V 1V9 | P: 519-886-2728

**FLORIDA OFFICE**

726 WINEGARD ROAD, 2<sup>ND</sup> FLOOR, SUITE  
#13, ORLANDO, FL. 32808 | P: 407-373-2003

INFO@CCWINC.COM  
WWW.CCWINC.COM

**FOLLOW US ON SOCIAL**

 CCW INC. ARCHITECTURAL MILLWORK CASEWORK  
 @CCWMILLWORKINC  
 @CCWINC

THIS IS **MORE** THAN MILLWORK.  
THIS IS A **MINDSET**.  
**THIS IS THE CCW WAY.**